

Shavings



Contents:

- Chairman's Welcome
- Notes from the January Meeting
- January Competition Results
- March Meeting Update
- Royal Hospital For Sick Children Update
- Demonstrating at Ballynure 29th February
- New Logo design
- Committee Contact Details
- Data Protection
- Shavings Editor
- 2020 Demonstrations and Competitions

Chairman's Welcome

By Eugene Grimley

Welcome to the second "Shavings" of 2020. You will have noticed some changes particularly the email address you will have received it from. You will also have noticed some new faces undertaking roles at our monthly meetings. I wish to thank them for volunteering and for the excellent work that they are doing to support the committee and to make the monthly demos more enjoyable.

Notes from the January Meeting

By Brendan McAreavy

Pat Walsh was the visiting demonstrator for Ulster Woodturning at The Wood Shed in February 2020.

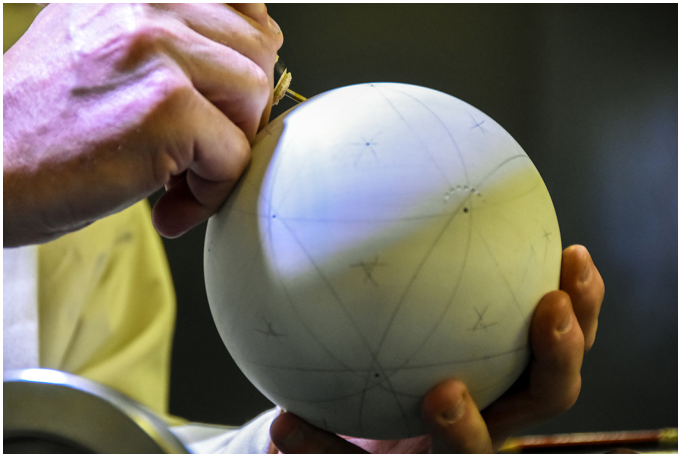
The theme of Pat's demo was the dodecahedron, a 12-sided polygon with each side a pentagon (5-sided plane) so he started with a completed

sphere and showed the layout for the dodecahedron. It is important to pay attention to accuracy and use instruments that will hold a setting. Pat mentioned that he changed the lead in his compass from a standard HB to a 2H hard lead to help keep lines fine and precise.



Very generously, Pat provided a comprehensive, step-by-step, guide to the process so that has been reproduced below. We are most grateful for this and thank Pat profusely. Printed instructions have been forwarded with this email for

you to print as well as an audio file of instructions.



Pat used the completed dodecahedron to make an attractive box. The first step is to find the centre of two planes on opposite sides of the piece. Pat found the mid-point of a side and drew a line to the opposite 'point'. He repeated this on another side and, where the lines crossed, indicated the centre of the plane. The operation was repeated on the opposite side of the piece. A hole was then drilled in one side in order to allow the piece to be mounted on a screw chuck and, after mounting, the piece was drilled to depth and hollowed out making sure not to contact the point of the screw chuck. Remember that the wall thickness is going to vary at different points along the sides so be careful not

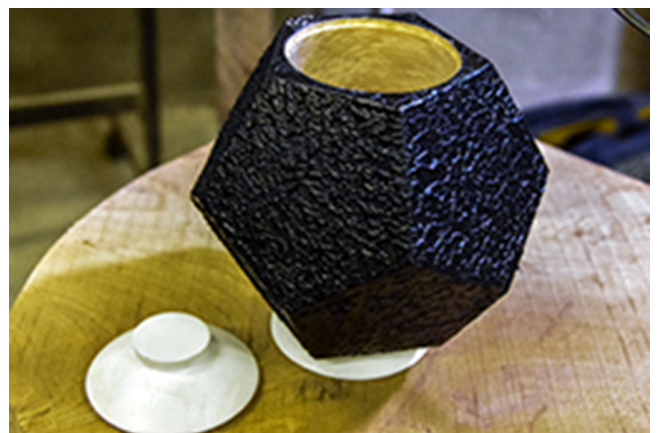
to cut through thinking you still have lots of wood.

When satisfied with the hollowing, the inside can be sanded and finished before removing the piece from the screw chuck and holding the hollowed end in expansion mode on a chuck to allow a recess to be cut on the bottom for a tenon plug and stand that will support the finished box.

It is worth remembering to keep checking the tightness of the piece on the screw chuck while hollowing and working at it.

When the box is completed, a base can be turned to fit the mortice on the bottom and a lid for the top. It is worth fitting the lid to the piece while it is on the lathe to allow any shaping and blending that might be required. The lid can be held in place with the tailstock.

This was a very interesting, and enjoyable, demonstration and the Ulster Woodturners were given lots of ideas for projects that can be made with completed spheres.



We thank Pat for making the long journey to visit us and hope he will return again.

January Competition Results

By Jim Neil

The January competition which is sponsored by The Woodshed attracted a total of 16 entries. The Judge our visiting demonstrator Pat Walsh congratulated all those who took part and awarded the Prizes, as follows

Category 1	Category 2
1. David Gault	1. Jim Stevens
2. David Spence	2. Robby Hughes
3. Mark McGranaghan	3. Eugene Grimley

March Meeting Update

Next month's demo on March 14th, has been upgraded to an all-day event. Starting at 9:30 the Cost will be £15 – bring your own lunch – Tea/Coffee supplied.

This will be a good opportunity to see one of Ireland's foremost demonstrators in action and it is a bonus that we have been able to secure him for a full day. Similar demos in other chapters cost in excess of £50. So once again we are able to offer brilliant value to our members.

Don't forget your competition entries. Cat 1 – a goblet, Cat 2 – a long stem goblet.

Royal Hospital

Jenne, from the Children's Hospital, will be along at 2pm to collect our Easter eggs, chicks etc. and to bring us up to date on how our contributions are being used.



Remember to bring all your bowls, eggs, chicks, etc along on or before the 14th and may I take this opportunity to thank you all once again for supporting this great cause.

Demonstrating at Ballynure 29th February

By Ricky McDonald

The first Ulster Woodturning community showcase/demo of 2020 will take place at Ballynure Nature day on Saturday 29th February.



Your support on the day for whatever time you can spare is appreciated. If you are able to attend to help by talking to the

public or turning please contact Ricky McDonald at the email address below.
woodturner123@hotmail.co.uk

New Logo etc.

A new logo and corporate identity is being developed for Ulster Woodturning. The logo you can see on Shavings will be widely used during our activities once colours etc are confirmed.



A new promotional leaflet is in the process of being printed and will be available for Ballynure. Popup banners are also in the process of being developed.



Ulster Woodturning

Ulster Woodturning offers a key point of contact and information for people interested in learning or developing woodturning skills.

Meetings take place at the Wood Shed near Templepatrick on the second Saturday of each month (Sept - June) usually at 2pm to 5pm but occasionally 9:30am to 5pm

You are welcome to attend your first meeting as our guest. If you are subsequently interested in joining we welcome those of all levels of skill from beginner to expert.

Membership offers advice and support through regular meetings and demonstrations.

As a registered Chapter of the Irish Woodturners' Guild it is part of the wider community of woodturning throughout Ireland.

To find out more or arrange a visit to us contact:
Eugene Grimley 07866620879
Mark McGranahan 07553656657 or
Sam/Lynda Moore at the Wood Shed 028 94433833

A new website is also currently being developed and it is hope that the first pages will be in place before the Summer

Committee Contact Details

Eugene Grimley Tel 07866620879
chairman@Ulsterwoodturning.co.uk
Mark McGranahan Tel 07553656657
secretary@Ulsterwoodturning.co.uk
Paul Finley Tel 07547399533
Treasurer@Ulsterwoodturning.co.uk
Ricky McDonald Tel 07751326582
woodturner123@hotmail.co.uk
Stephen Dowie Tel 07771886500
stephen.dowie@icloud.coms
Brendan McArevey Tel: 07958303506
brendan.mcareavy@googlemail.comb
Billy Ferris Tel 07801981641
billyferris48@icloud.comb

Data Protection

Some of your personal details, i.e. email address, and telephone numbers, are held in our records. We only use this data to coordinate Ulster Woodturning. If you would like to know what information we hold and how we use it, or if you wish us to remove it from our records, please contact the Secretary, Mark McGranahan. If your information is removed, you will no longer receive any official communication (emails, telephone calls or correspondence) from Ulster Woodturning or the Irish Woodturners Guild.

Shavings Editor

To contact the editor email
shavings@ulsterwoodturners.com

2020 Demonstrations and Competitions
(Pin this up in your workshop)

All competition entries must be new pieces. Please do not resubmit previous (winning) pieces except for the Open competition at the Seminar in June when pieces entered from Sept 2019 to May 2020 are eligible.

	Demonstrator	Competition Cat 2	Competition Cat 1
Feb 8 th @ 2pm	Pat Walsh	Natural edge bowl	Natural edge bowl
Mar 14 th @ 9.30	Robert O'Connor	Long stem goblet	Goblet
Apr 11 th @ 2pm	Kieran Reynolds	Easter egg (hollow)	Easter egg (solid)
May 9 th @ 2pm	David O'Neill	Vase	Bud vase
June 13 th @ 9.30	Ambrose O'Halloran	OPEN competition (see below)	
Sept 12 th	Liam O'Neill	Cake stand (2 tier at least)	Platter
Oct 10 th @ 2pm	Jim Kelly	Toy	Toy
Nov 14 th	To be announced	Decorated bowl	Bowl
Dec 12 th @ 2pm	Eugene Grimley	Christmas ornament	Christmas ornament